



GIVE NOW

IMPACT

FOREVER

EXPANDING ILM FOR A BRIGHTER FUTURE



ILM ACADEMY

Nurturing Young Muslims

'A child is a trust
(placed by God) in
the hands of his
parents, and his
innocent heart is a
precious element
capable of taking
impressions'

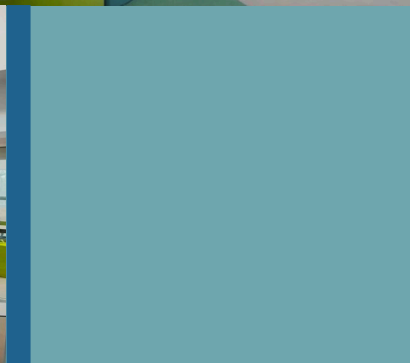
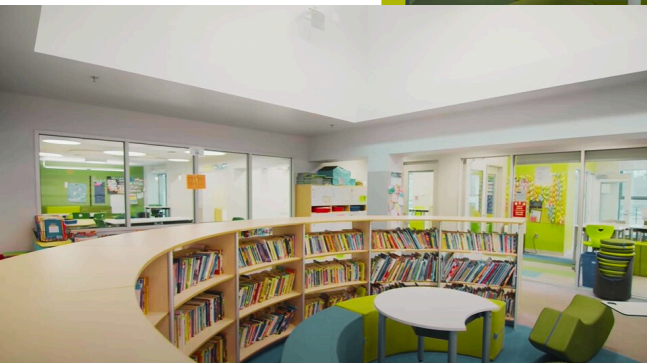
- *Imam Al-Ghazali* -



W
A
P
A
G
E

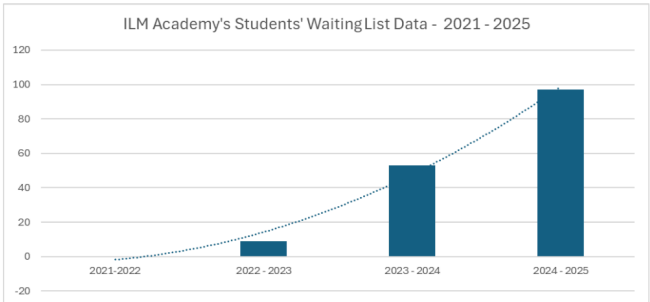
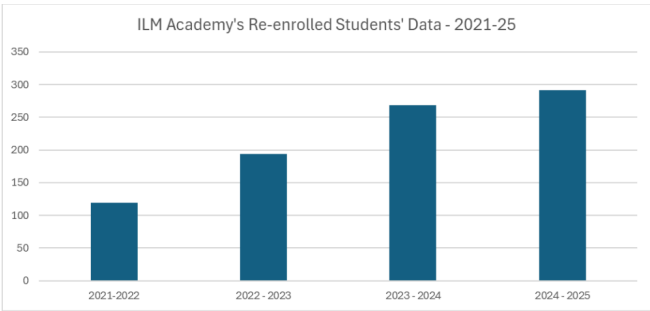
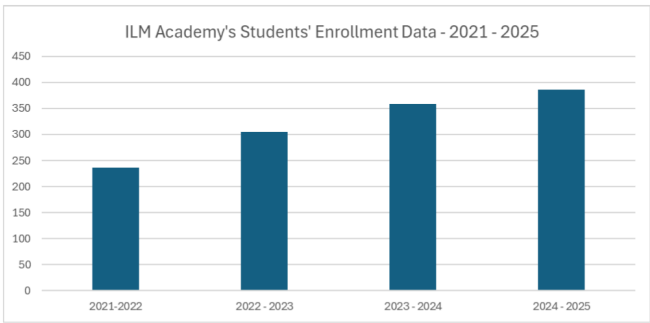
Unlocking New Horizons: Expanding Our School for a Brighter Future

As our beloved Islamic community grows, we face an exciting challenge: creating the space and resources our students need to thrive. Our current facilities have served us for a long time, but to meet the evolving needs of our students and uphold our standards of excellence in Islamic education for our community, we embark on an expansion journey.



Supporting Enrollment Growth

Every year, an increasing number of families choose ILM’s nurturing Islamic environment for their children. Since 2021, the school has experienced a significant increase in student enrollment, and the number of students on the waiting list has increased to 1000%, with almost 100 students on the waiting list, limiting our current space to accept new students. Our new building enables us to accommodate more students without compromising the quality of education. The data below indicate ILM’s last five-year growth, including the number of enrolled, re-enrolled, and waiting-to-be-enrolled students.





W
A
S
T

Enhancing Learning Experience

ILM Academy's commitment to academic excellence means staying current with educational demands and trends and providing a diverse range of resources.

By expanding, we can integrate modern instructional approaches that provide students with a quality curriculum and learning experience. Making the class size smaller while maintaining the ideal teacher-student ratios in each classroom and providing advanced STEM resources that empower our students is an immediate demand and a top priority of our school.

Creating Dedicated Spaces for Religious Learning

A central part of our mission is to nurture students' development in an Islamic environment. A larger facility will allow us to create dedicated spaces for Quran and Islamic studies, areas of self-reflection, and counseling, deepening our students' connection to their faith, broadening their Islamic perspective, taking pride in their Muslim Identity, and supporting their spiritual growth as young and productive Muslims in society.

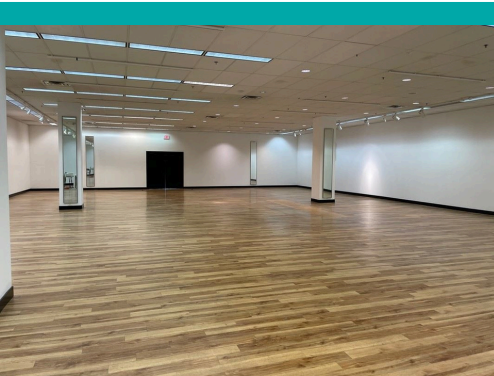


MP
PA
GI

W
P
A
G
E

Fostering a Community of Belonging and Improving Extracurricular Offerings

A new building will help us establish welcoming spaces for extracurricular activities and events, enabling students to explore their talents and interests and develop well-rounded students. More space will also provide multipurpose halls and facilities where parents, students, and teachers can come together for community gatherings and extracurricular and educational sessions for students, parents, and communities, fostering a strong sense of belonging and supporting our mission of building a connected, faith-centered community.



About the New Campus

The new campus space of 35,000 square feet will allow ILM Academy to offer additional enriched and specialized programs across all grade levels. With almost double the space of the current IMC building, the new campus will enable us to reduce class sizes with 1:18 teacher-student ratio, introduce modern learning approaches, such as 'learning communities', expand Montessori programs to upper grades, support a more comprehensive range of academic tracks, including honors and advanced classes for middle school, and establish a fully on-campus high school program better to meet each student's needs by their grade level.

ILM Academy's New Campus Vision

- Instructional (Classroom), Intervention, & Counseling Room
- Library Media Center & Learning Hall
- Auxiliary Gymnasium & Multi-Activity Room
- Cafeteria and Kitchen
- Wudu & Prayer Area

ILM Academy's Current State	
Campuses	Total Square Footage By Campus
ILM Owned	
- ILM Main Campus (IMC) - ILM	17,000 sq. ft.
Rented Space	
- Early Childhood Campus (ECC)	8,000 sq. ft. (first & second floors)
- ILM Resource Center (IRC)	6,000 sq. ft. (first floor)
Total Area	31,000 sq. ft.

ILM Academy's Future Vision	
Campuses	Total Square Footage By Campus
ILM Main Campus (IMC)	17,000 sq. ft.
ILM New Campus	35,000 sq. ft.
Total Area	52,000 sq. ft.

Instructional (Classroom) Space By Program				
	Current Students' Enrollment	Current Classroom Square Footage - Used	Projected Students' Enrollment	Square footage Needed (Approximately)
Early Childhood Programs	66	2,220 sq. ft.	98	3,400 sq. ft.
Montessori Programs	73	2,700 sq. ft.	105	4,500 sq. ft.
Elementary Programs	117	3,000 sq. ft.	180	6,350 sq. ft.
Middle School Programs	94	2,500 sq. ft.	120	5,750 sq. ft.
High School Programs	33	1,600 sq. ft.	45	2,000 sq. ft.
Total	386	12,000 sq. ft.	548	22,000 sq. ft.



Campus Expansion Financial Plan

ILM Academy's campus expansion financial plan outlines a clear path to achieving ILM Academy's goal to attain sustainable growth. Through structured fundraising and prudent financial management, ILM Academy is set to meet the financial requirements efficiently through a combination of funding sources.

Project Budget Overview	
Project Items	Amount (\$)
New Building Price	\$4,489,200
Investment Funds	\$2,389,200
ILM's Available Fund	\$1,100,000
Fundraising Goal	
Building Purchase	\$1,000,000
Construction Cost (estimated)	\$1,000,000
Total Project Cost	\$5,339,200

Funding Sources

Investment funds of more than two million provides a substantial portion of the required budget, ensuring the project's feasibility. Internal funds of one million have been allocated by ILM Academy for building purchase.

Fundraising Goal

To reach the fundraising target, ILM Academy implemented a multi-phase fundraising campaign, leveraging community events, recurring donations, corporate sponsorships and matching gifts, crowdfunding and online fundraising campaigns.

The community focused fundraising aims to raise \$1,000,000, enabling the school to meet its financial goals to purchase the new campus.



Join Us on This Journey

With your support, we can acquire a bigger campus that supports academic excellence and spiritual growth.

Help us build a state-of-the-art space where future generations of Muslim students will flourish, embrace their faith, and contribute to our community and beyond.

Together, we can shape the future of our students through Islamic education at ILM Academy!

ILM
ACADEMY

Frequently Asked Question

What limitations are there in the current buildings?

ILM Academy's Early Childhood Campus (ECC) lease expires in the summer of 2025, limiting the expansion potential of our Montessori and early childhood programs.

ILM Academy's IMC building also needs more capacity to accommodate our anticipated growth of over 300 additional students, with limited space for additional sections or specialized facilities. Due to these space constraints, many prospective students are wait-listed, making it challenging for ILM Academy to meet community demand.

Are there any safety or overcrowding concerns?

Yes, with current class sizes averaging 25-30 students, the need for more space is essential. A larger building will allow us to create smaller, more manageable class sizes, averaging 18 to 20 students per class, promoting better instruction, safer environments, and a more personalized learning experience for each student.

How much funding is needed for the new building? OR How much does the school need to raise to meet its goals?

To ensure we can meet our educational and community objectives, we hope to raise \$3 million to support the school's immediate needs, such as purchasing the new building and fully funding the expansion project. This amount reflects our most critical building purchase needs and the new campus construction needs.

Why does the school need to fundraise?

As a non-profit K-12 Islamic school, ILM Academy offers affordable tuition and relies on the generosity of our community to cover essential costs not fully met by tuition alone. Donations help us enhance the resources that foster our students' educational and spiritual growth.

How will the funds raised be used?

Every dollar raised will go directly toward the purchase of the building, facility upgrades, equipment, and furnishings needed to support the next phase of our school's expansion. Every contribution brings us closer to providing a state-of-the-art learning environment for our students.

- Detailed annual reports on fund allocation will be provided to maintain transparency and accountability.

Frequently Asked Question

Is my donation tax-deductible?

Yes. As a registered 501(c)(3) non-profit organization, donations to ILM Academy are fully tax-deductible allowed by law. You will receive a receipt for your donation to use for tax purposes.

Can I make a recurring donation?

Absolutely! Recurring donations are extremely valuable as they provide a steady stream of support. You can choose to give monthly, quarterly, or annually and set up a recurring gift directly through our website or by contacting our business office.

Are there opportunities to sponsor specific items or projects?

Yes, ILM Academy offers sponsorship options for specific items or projects within the school, such as sponsoring a classroom, technology upgrades, or prayer spaces. We would be honored to recognize your family or organization as a named sponsor. Please contact us directly to learn more about these opportunities.

What other ways can I support ILM Academy?

In addition to monetary donations, you can support us by:

- **Encouraging others to donate** or participate in school fundraising events and campaigns.
- **Donating resources** like books, technology, or classroom materials.
- **Volunteering your time** in areas such as event planning, reaching out to donors, etc.

How can I donate?

You can donate securely online through ILM Academy's website, mail a check, or visit our school's office in person. Please contact our business office directly for other giving options, including bank transfers or gifts of appreciated stock.

Who should I contact with additional questions?

For more information or specific inquiries, please get in touch with our business office at 678-624-1157 or email at businessoffice@ilm-academy.com. We would be happy to discuss how your support can impact our students and school community.

Thank you for helping us build a brighter future for our students!



رَبِّ اجْعَلْنِي مُقِيمَ
الصَّلَاةِ وَمِن ذُرِّيَّتِي رَبَّنَا
وَتَقَبَّلْ دُعَاءِ (٤٠) رَبَّنَا
اغْفِرْ لِي وَلِوَالِدَيَّ
وَلِلْمُؤْمِنِينَ يَوْمَ يَقُومُ
الْحِسَابُ (٤١)

My Lord! Make me and those
'believers' of my descendants
keep up prayer. Our Lord!
Accept my prayers. Our Lord!
Forgive me, my parents, and
the believers on the Day
when the judgment will come
to pass.

- Surah Ibrahim (40 - 41) -



ILM ACADEMY

Nurturing Young Muslims



678.624.1157



info@ilm-academy.com



www.ilm-academy.com

Follow Us On 